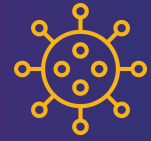




WOMEN AND COVID-19



EDUCATION

Massive education interruptions due to the pandemic means women and girls are facing additional barriers to empowerment.



Schools, from primary to college, are closed and it's unclear when they'll reopen. Over **1.5 billion students** have been impacted by these closures in 191 countries.

(UNESCO)



Girls are especially vulnerable when schools are closed for extended periods, facing increased risk of **permanently dropping out, teen pregnancy, and sexual abuse.**

(Women's UN Report Network)

Girls who already face obstacles may have **increased difficulty with remote learning**, either because internet access is limited or because they are expected to care for family members.

(Women's UN Report Network)



With women more likely to face unemployment due to the pandemic, enrolling or continuing with their **education becomes financially impossible.**

(Institute for Women's Policy Research)



WORK

The pandemic has disproportionately impacted work for women, resulting in widespread job losses.

The majority of jobs lost due to the pandemic **were held by women.**

(Institute for Women's Policy Research)

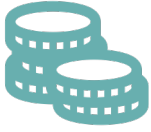


Women of color have been hit hard by job losses, facing **unemployment rates as high as 20%.**

(NYTimes)



WOMEN AND COVID-19 (CONT'D)



Women often work in **low-paying service industries** such as hospitality and childcare, leaving them with **less of a financial safety net** during unemployment.

(NYTimes)

HOME

While obeying stay-at-home orders, many women are facing uneven division of household responsibilities or even increased violence.



Single mothers are struggling to juggle their jobs, their online education, and their kids' homeschooling. Meanwhile, mothers with partners report an **unfair split of household tasks and childcare.**

(NYTimes)



Women may be facing **increased exposure to violence with an abuser at home** under tense circumstances, and have a harder time accessing resources.

(UN Population Fund)

The **added domestic load** women are taking on can contribute to lower wages and **negatively impact career trajectories.**

(American Economic Association)



The United Nations estimates that for every 3 months the lockdown continues, an additional **15 million cases of gender-based violence are expected.**

(UN Population Fund)



SOURCES

1. UNESCO. "COVID-19 Educational Disruption and Response." <https://en.unesco.org/covid19/educationresponse>
2. Women's UN Report Network. "Actions to Bring the Most Marginalized Girls to School After COVID-19." <https://wunrn.com/2020/05/actions-to-bring-the-most-marginalized-girls-to-school-after-covid-19/>
3. Institute for Women's Policy Research. "Dramatic Decline in Employment Hits Women Even More Severely than Men" <https://iwpr.org/wp-content/uploads/2020/05/QF-Breadwinner-Mothers-by-Race-FINAL.pdf>
4. NYTimes. "Why Some Women Call This a 'Shecession'." <https://www.nytimes.com/2020/05/09/us/unemployment-coronavirus-women.html>
5. NYTimes. "Nearly Half of Men Say They Do Most of the Home Schooling. 3 Percent of Women Agree." <https://www.nytimes.com/2020/05/06/upshot/pandemic-chores-homeschooling-gender.html>
6. American Economic Association. "The Expanded Gender Earnings Gap." <https://www.aeaweb.org/articles?id=10.1257/aer.p20171065>
7. UN Population Fund. "" https://www.unfpa.org/sites/default/files/resource-pdf/COVID-19_impact_brief_for_UNFPA_24_April_2020_1.pdf



Soroptimist is a global volunteer organization that provides women and girls with access to the education and training they need to achieve economic empowerment.

